

SIGN LANGUAGE RECOGNITION SYSTEM

Prof. Thigale S. S. , Sejal, Sonawane, Ishmeet Kaur, Bhawna Rathore, Tanisha Sethi

*Department of Computer Engineering.
SKN Sinhgad Institute of Technology and Science,
Pune, India*

ABSTRACT

Sign language is used widely by people who are hearing impaired as a medium for communication. A sign language is the composition of various gestures formed by different shapes of hand, their movements, orientations as well as the facial expressions. There are around 466 million people worldwide with hearing loss and 34 million of these are children. 'Hearing impaired' people have very little or no hearing ability. Hence, they use sign language for communication. Different sign languages are used by people in different parts of the world. Compared to spoken languages they are very less in number. India has introduced its own sign language called Indian Sign Language (ISL). In developing countries, there are only very few schools for deaf students. In developing countries, the unemployment rate of sensory impaired people is very high. Data from Ethnologue states that among the deaf population in India, which is about one percent of total population, the literacy rate and the number of children attending school is very less. It goes on to state that official recognition of sign languages, increasing the availability of interpreters, and providing transcription in sign languages greatly improve accessibility. Signs in sign languages are the equivalent of words in spoken languages Signed languages appear to favor.

Keywords: Indian Sign Language (ISL), Sign Language Recognition, Sign to Text, Convolutional Neural Network (CNN), Hand gesture, OpenCV.

INTRODUCTION

The use of sign language in day to days life has increased due to its applicability in many areas such as communication systems for sensory impaired people, human control interaction, machine control in the industrial field, and many more.

Sign language is made of different gestures, body language, and in some cases, facial expressions. Sign language is used by sensory impaired people, mainly those who can't speak or hear. Various Sign Languages such as ISL (Indian Sign Language) and ASL (American Sign Language) use hand and finger movements to represent the words. Sign language is not spoken the same in the world. It differs from one geographical section to another. For Example, Countries like America, India, and China have their own sign languages named American Sign Language, Indian Sign Language, and Chinese Sign Language respectively.

The need for systems like sign language recognition systems arises when sensory disabled people need to communicate with the other part of the society, and they need an interpreter who can interpret sign language to spoken language and vice versa. But it is not possible to have an interpreter every time when needed. Sign language mostly includes hand and finger gestures,

therefore SLR focuses on hand gesture tracking and recognition. There are between 138 to 300 sign languages and because of that, we cannot have a universal Sign Language Recognition System. In general Sign Language Recognition is classified in the following category:

1. Word Recognition
2. Continuous Sign Recognition
3. Alphanumeric Sign Recognition

We can classify Sign Language Recognition System as:

1. Glove (Sensor) Based
2. Vision-Based

1. Glove (Sensor) Based

Salma A. Essam El-Din and Mohamed A. Abd El-Ghany[1] composed A glove-based recognition system of three main units. The MPU6050 and the flex sensors represent the input unit, giving all the required input data to the processing unit. This data is then processed using the Arduino Mega microcontroller board. Upon reaching the output unit, it displays the detected gestures on a GUI using Python3. The implementation process includes three steps: hardware design, communication between Arduino and Python, and last detecting and displaying the gestures.

Sensor-based gloves measure tension and pressure between fingers. Examples of the most widely known sensor glove technologies are the

- Power Glove
- Data Glove
- Cyber Glove
- Kinect Sensor

2. Vision-Based

Disha Gangadia, Varsha Chamaria, Vidhi Doshi, and Jigyasa Gandhi[2] Build a vision-based sign language system that takes video inputs of gestures in the specified ROI and performs gesture recognition using various feature extraction techniques and Hybrid-CNN model trained using the ISL database created. The correctly identified gesture tokens are sent to a Rule-Based Grammar and for Web Search query to generate various sentences and a Multi-Headed BERT grammar corrector provides grammatically correct and precise sentences as the final output. There are various algorithms such as SVM (Support Vector Machine), K-NN (K-Nearest Neighbors), CNN (Convolutional Neural Network) which are generally used in the sign language recognition system.

LITERATURE SURVEY

Compared to spoken languages, sign languages are very less in number. To aid those in need and to encourage the use of sign language, research has been carried out and new projects and systems are created. This not only increases the literacy rate, but it also helps people to communicate with each other with lesser limitations.

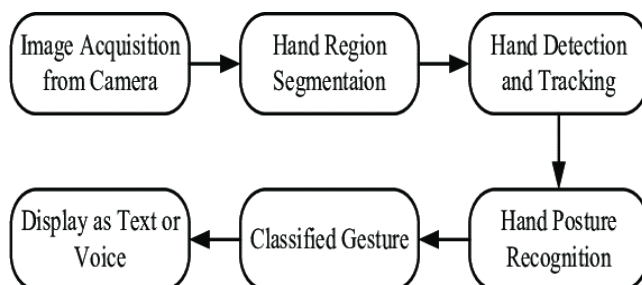
Lance Fernandes, Prathmesh Delvi and Akash Junnarkar used HC-05 Bluetooth module to facilitate wireless communication and CNN (Convolutional Neural Network) in their research paper, Convolution Neural Network based Bidirectional Sign Language Translation System. The CNN was trained to capture features from hand. They have achieved an accuracy of 91.7 percent on cross-validation containing different users with different backgrounds from the training set and testing accuracy of 95.68 percent but it contained users and backgrounds from the training set. The drawbacks of this were that the system couldn't differentiate '2' and '3' from 'v' and 'w' respectively.

In another paper, Recognition of Sign Language Symbols using Templates, published in the year 2020, the authors, Deepika Pahuja and Sarika Jain, used the non-Parametric approach for skin colour detection and the image processing toolbox of MATLAB. This had a success rate of 78 percent with the only limitation being that due to recognizing sign language symbols using static images, the vocabulary of the system was limited.

In 2020, a paper named Sign Language Interpreter System: An alternative system for machine learning was published by Salma A. Essam El-Din¹ and Mohamed A. Abd El-Ghany. The authors used Arduino for receiving the readings and turning it into outputs and glove-based motion tracking sensor to identify gestures. However, given the limitations of having such delicate sensors and gloves makes it inconvenient to use.

METHODOLOGY

A. Image Acquisition from camera



The camera is the input device for our SLR as we acquire the required sign for the system. There is ample research is going in the field of Sign language recognition Researchers create standard database of signs and made them available for fellow researchers. As Sulochana Nadgeri

Dr. Arun Kumar[5] mentioned in their survey. The standard dataset is available for the following language:

- ASL- Kaggle, ASL Lexicon Video Dataset.
- German sign Language- RWTH German Fingerspelling Database, RWTH-PHOENIX
- Australian Sign Language (Auslan): UCI Australian Sign Language
- Brazilian Sign Language: UCI- Libras Movement Data Set
- Spanish Sign Language: (ARAAC)
- Indian Sign Language: IIITA-ROBITA ISL
- Irish sign language: ATIS Corpus
- Dutch Sign Language: Corpus NGT Indian Sign Language: IIITA-ROBITA ISL

But there are so many sign languages for which a standard dataset is not available. Researcher creates their own database for training purpose. 32 Tamil sign is created using web camera using 5 signers as no dataset is available for Tamil sign language[6]. The Signs World ArSL DB is an image and video DB that has been developed by the authors for Arabic Sign Language. The dataset contains manual and non-manual sign performed by 10 signers[7]. Bangladeshi hand sign language Recognition system use a dataset of 17 words and 8 popular sentences which has been created using videos[8]. Swedish sign language vocabulary of 51 sign for Tivoli game recorded with Kinect sensor which colour, depth and skeleton data. The vocabulary is composed of four subsets - objects, colours, animals, and attributes[9]. The image acquisition can be done using web camera, digital camera or [10][9] Microsoft Kinect.

B. Hand Region Segmentation

Hand gesture plays a vital role in the Sign Gesture Recognition System since rest of the steps depends on the result of this step, due to improper segmentation, the system fails to give correct result. Using Haar classifier the face is removed from image and simultaneously motion is also detected finally morphological operations were performed on both the images separately. The AND operation on the outputted images is performed which will give good result in complex background also[11]. Input video is converted from RGB to YCbCr colour Model to detect skin colour and largest region of skin colour which is face subtracted from image[12]. The researcher presents combination of dynamic adaption and Bayesian decision framework which is illumination invariant real time skin colour detection technique[13]. Skin colour area is detected using hue, Saturation and RGB threshold. Median Blur preserves the edges of the hand gestures[14]. Person Independent Hand Segmentation using HSV Colour Space by Decision Rule is proposed in which algorithm refresh the feature vector for every new user[15]. RGB colour converted in HSV and YCbCr and threshold value of Cb, Cr and Hue define Skin colour[16]. RGB image is converted in grey scale retaining the luminance information. First derivative Sobel edge gives better result in the presence of noise also[17]. In the proposed method image is resized and vertically/horizontally a predetermined number of pixels were skipped to reduce CPU time for skin colour detection process[18]. Image with background and without background is captured

separately then image is converted into YCrCb and HSV and the binary images are then added to get maximum result. Region filling and morphological operation which enhance image. This method gives better result even if there is drastic illumination changes and cluttered backgrounds which does not require background subtraction[19]. YCgCr colour space is illumination invariant, secondly, the Y channel extract the features of gray image, which can reduce the amount of computation. The YCgCr colour space has strong skin colour aggregation, the Cg and Cr components can effectively distinguish skin and non-skin colour. The advantage of this method is high locating accuracy and low computational complexity, which is more suitable for the hand gesture recognition[20].

C. Feature Extraction (Hand Detection and Tracking and Hand Posture Recognition)

The input images are containing lots of information which take large processing real time and every feature does not contribute in recognition of Sign language. feature extraction technique reduces the dimension and contents of the input image, retains only those features which are unique for each sign and essential for recognition. Feature extraction is an essential pre-processing step to pattern recognition as well as machine learning.

Sr. No	Ref. No.	Feature Extraction Method /Parameter	Import Source
1	21	DCT coefficients of head area, the left-hand area and the right-hand area.	Video
2	22	Fourier descriptors	Video
3	23	Shape Descriptors	Image
4	24	Elliptical Fourier descriptors	Video
5	25	Eigen value and Eigen vector	Video
6	26	Hand Shape circularity and extent, Hand Motion-motion detection code, Hand Orientation-direction of change	Video
7	27	Principal Component	Image
8	28	Haar Like Feature	Image
9	29	Direct Pixel Value	Image
10	29	Hierarchical centroid	Image
11	12	Hand Shape circularity and extent, Hand Motion-motion detection code, Hand Orientation-direction of change	Video
12	30	Color, Intensity and texture.	Video
13	31	Fourier descriptors	Video
14	32	Hand Width and height, hand Orientation, Euler number	Video
15	33	Orientation Histogram	Video

16	34	Fusion descriptor - combination of contour and region-based descriptors.	Image
17	35	Edge Orientation Histogram	Image
18	36	Haar Like Feature	Image
19	37	Global Features and Local Features	Image
20	14	Orientation Histogram	Video

Fig. 1. Feature extraction methods summary

D. Classified gesture

Classification is important in Sign Language Recognition system as it takes the features extracted as an input and recognize correct gesture. This process identifies to which category the given sign gesture belongs. Classification generally done on the basis on the training set of data of the observation, whose category is known. Support Vector Machines, Naive Bayes Classifier, Artificial Neural Network, Hidden Markov Model few classifiers to mention.

No. of Signs.	Sign Language	Methodology	Accuracy ()
32	Malaysian Sign Language (MSL).	Artificial Neural Network (ANN)	92.07%
23 words, 40 sentence	Arabic Sign Language	Naive Bayes Classifier (NBC)	Sentences75 % Words94%
80	Indian Sign Language	Fuzzy inference system	96%
24	Indian Sign Language	Euclidean Distance based classification	96.25%.
51	Swedish Sign Language	Hidden Markov Model	89.70%
21	Indian Sign Language	MSVM	95.30%
21	Indian Sign Language	BKNN	89.90%
10	Indian Sign Language	k-Nearest Neighbor	97.04%
1 word, 4 sentences	Indian Sign Language	Haar Cascade	92.68%
10	Indian Sign Language	k-Nearest Neighbor	97.10%

28	Arabic Sign Language	Naive Bayes Classifier (NBC)	98.30%
28	Arabic Sign Language	Multilayer Perceptron Neural networks	99.10%
22	Indian Sign Language	MSVM	90.46%
5	Indian Sign Language	Artificial Neural Networks	NA
26	American Sign Language	Back Propagation Neural Network	90% for each sign
46	Indian Sign Language	Minimum Distance	92.91%
75	Indian Sign Language	Distance Based Classifier	NA
26	American Sign Language	Haar like classifier	98.7%
26	American Sign Language	Distance Based Classifier	88.26%
15	Thai Sign Language	SVM+RBF	91.20%
26	American Sign Language	1A1SVM	99.23%
31	Bengali Sign Language	Geometric Hashing	51.35%
32	Bangladeshi sign language	SVM	94.26% for words and 94.49% for sentences
33	Brazilian Sign Language	SVM	Above 80%

Fig.2 : Sign Gesture Classification Summary.

CONCLUSION

In this project, we proposed an idea for feasible communication between hearing and vision impaired people and a person with ability to hear and see more compared to the former, with the help of deep learning and machine learning approach.

ACKNOWLEDGMENT

We would like to express our sincere gratitude towards our guide Prof. Thigale for her invaluable guidance and supervision that helped us in our research. She has always encouraged us to explore new concepts and pursue newer research problems. We credit our project contribution to her. Collectively, we would also like to thank our Head of Department Prof. G. M. Kadam and our principal Prof. M. S. Rohokale for their time, suggestions, and for always making themselves available. We cannot thank them enough.

REFERENCES

- [1] Salma A. Essam El-Din¹ and Mohamed A. Abd El-Ghany," Sign Language Interpreter System: An alternative system for machine learning."
- [2] Disha Gangadia, Varsha Chamaria, Vidhi Doshi, jigya Gandhi," Indian Sign Language Interpretation and Sentence Formation."
- [3] Lance Fernandes, Prathmesh Delvi and Akash Junnarkar," Convolution Neural Network based Bidirectional Sign Language Translation System."
- [4] Deepika Pahuja and Sarika Jain,"Recognition of Sign Language Symbols using Templates."
- [5] Sulochana Nadgeri Dr. Arun Kumar," SURVEY OF SIGN LANGUAGE RECOGNITION SYSTEM"
- [6] P. S. Rajam, G. Balakrishnan, "Recognition of Tamil sign language alphabet using image processing to aid deaf-dumb people", Procedia Eng., vol. 30, pp. 861- 868, 2011.
- [7] Samaa M.Shohieb, Hamdy K.Elminir, A.M.Riad "SignsWorld Atlas; a benchmark Arabic Sign Language database" Journal of King Saud University - Computer and Information Sciences Volume 27, Issue 1, January 2015, Pages 68-76 (folder 55)
- [8] Umme Santa, Farzana Tazreen and Shayhan Ameen Chowdhury,"Bangladeshi Hand Sign Language Recognition from Video",20th International Conference of Computer and Information Technology (ICCIT), 22-24 December, 2017
- [9] Kalin Stefanov and Jonas Beskow, "Kinect Corpus of Swedish Sign Language Signs "Proceedings of the 2013 Workshop on Multimodal Corpora: Beyond Audio and Video
- [10] Kazi Ehsan Aziz, Ashzabin Wadud, Sadia Sultana,Md. Akter Hussain,Alauddin Bhuiyan,"Bengali Sign Language Recognition Using Dynamic Skin Calibration and Geometric Hashing",2017 6th International Conference on Informatics, Electronics and Vision & 2017 7th International Symposium in Computational Medical and Health Technology (ICIEV-ISCMHT) (2017),Himeji, Japan, 2017
- [11] Ananya Choudhury,Anjan Kumar Talukdar,Kandarpa Kumar Sarma,"A Novel Hand Segmentation Method for Multiple-Hand Gesture Recognition System under Complex Background" International Conference on Signal Processing and Integrated Networks (SPIN), 2014
- [12] Bhumika Pathak, Subhash Chand Agrawal,Anand Singh Jalal,Charul Bhatnagar "A Framework For Dynamic Hand Gesture Recognition Using Key Frames Extraction ", Fifth National Conference on Computer Vision, Pattern Recognition, Image Processing and Graphics (NCVPRIPG),2015

- [13] Leyuan Liu, Nong Sang, Saiyong Yang and Rui Huang, "Real-Time Skin Color Detection under Rapidly Changing Illumination Conditions" IEEE Transactions on Consumer Electronics (Volume: 57, Issue: 3, August 2011), Pages: 1295 – 1302
- [14] Vibhav Joshi, Rushikesh Hiray, Sakshi Kale, Shweta Mantode, "Hand Gesture Recognition using Gradient based Key Frame Extraction", Journal of Image Processing and Artificial Intelligence Volume 4 Issue 1, 2018 pages 1-6
- [15] Gajanan K. Kharate , Archana S. Ghotkar, " Vision Based Multi-Feature Hand Gesture Recognition For Indian Sign Language Manual Signs", International Journal On Smart Sensing And Intelligent Systems Vol. 9, No. 1, March 2016
- [16] Ashok Kumar Sahoo, Kiran Kumar Ravulakollu, "Indian Sign Language Recognition using Skin Colour Detection", International Journal of Applied Engineering Research, Volume 9, Number 20 (2014) pp. 7347-7360
- [17] Madhuri Sharma, Ranjna Pal And Ashok Kumar Sahoo, "Indian Sign Language Recognition Using Neural Networks And KNN Classifiers", ARPN Journal Of Engineering And Applied Sciences, 2014
- [18] Tarek M. Mahmoud, "A New Fast Skin Color Detection Technique", International Scholarly and Scientific Research & Innovation 2(7) ,2008
- [19] S N Karishma, V Lathasree , "Fusion Of Skin Color Detection And Background Subtraction For Hand Gesture Segmentation", International Journal of Advanced Trends in Computer Science and Engineering, Vol. 3 , No.1, Pages : 13 – 18, 2014
- [20] YaNan Xu, Gouchol Pok "Identification of Hand Region Based on YCgCr Color Representation" International Journal of Applied Engineering Research, Volume 12, Number 6 ,2017
- [21] Paulraj M P, Sazali Yaacob, Hazry Desa, Hema C.R., " Extraction of Head and Hand Gesture Features for Recognition of Sign Language "2008 International Conference on Electronic Design December 1-3, 2008, Penang, Malaysia
- [22] S. Bourennane, C. Fossati "Comparison of shape descriptors for hand posture recognition in video", Signal, Image and Video Processing, 2012, Volume 6, Number 1, Page 147
- [23] Subhash Chand Agrawal, Anand Singh Jalal, Charul Bhatnagar, "Recognition of Indian Sign Language using Feature Fusion", IEEE Proceedings of 4th International Conference on Intelligent Human Computer Interaction, Kharagpur, India, 2012
- [24] V. V. Kishore a, P. Rajesh Kumar, "A Video Based Indian Sign Language Recognition System (INSLR) Using Wavelet Transform and Fuzzy Logic", IACSIT International Journal of Engineering and Technology, Vol. 4, No. 5, October 2012
- [25] Joyeeta Singha, Karen Das, "Recognition of Indian Sign Language in Live Video" International Journal of Computer Applications (0975 – 8887) Volume 70– No.19, May 2013
- [26] Subhash Chand Agrawal, Anand Singh Jalal, Charul Bhatnagar, " Redundancy removal for isolated gesture in Indian sign language and recognition using multi-class

- support vector machine "Int. J. Computational Vision and Robotics, Vol. 4, Nos. 1/2, 2014
- [27] Shreyashi Narayan Sawant, M. S. Kumbhar, "Real Time Sign Language Recognition using PCA", 2014 IEEE International Conference on Advanced Communication Control and Computing Technologies (ICACCCT)
- [28] Kanchan Dabre, Surekha Dholay, "Machine Learning Model for Sign Language Interpretation using Webcam Images", 2014 International Conference on Circuits, Systems, Communication and Information Technology Applications (CSCITA) (folder 21)
- [29] Madhuri Sharma, Ranjna Pal, Ashok Kumar Sahoo, "Indian Sign Language Recognition Using Neural Networks And Knn Classifiers", Arpn Journal Of Engineering And Applied Sciences, Vol. 9, No. 8, August 2014
- [30] Julia Kučerová, Jaroslav Polec, "Detection Of Frames With Single Complete Signs Of Finger Alphabet In Video Sequence Using Visual Attention Approach", Journal Of Electrical Engineering, VOL. 66, NO. 3, 2015, 142–148
- [31] Purva C. Badhe, Vaishali Kulkarni, "Indian Sign Language Translator Using Gesture Recognition Algorithm", 2015 IEEE International Conference on Computer Graphics, Vision and Information Security (CGVIS)
- [32] Pratibha Pandey, Vinay Jain, "An Efficient Algorithm for Sign Language Recognition", Pratibha Pandey et al, / (IJCSIT) International Journal of Computer Science and Information Technologies, Vol. 6 (6), 2015, 5565-5571
- [33] Ramesh M. Kagalkar, S.V Gumaste, "Gradient Based Key Frame Extraction for Continuous Indian Sign Language Gesture Recognition and Sentence Formation in Kannada Language: A Comparative Study of Classifiers", International Journal of Computer Sciences and Engineering Vol.-4(9), 2016
- [34] Gajanan K. Kharate, Archana S. Ghotkar, "Vision Based Multi-feature Hand Gesture Recognition For Indian Sign Language Manual Signs", International Journal On Smart Sensing And Intelligent Systems Vol. 9, No. 1, March 2016
- [35] Jayshree R. Pansare, Maya Ingle, "Vision-Based Approach for American Sign Language Recognition Using Edge Orientation Histogram", 2016 International Conference on Image, Vision and Computing.
- [36] Vi.N.T. Truong, Chuan-Kai Yang, Quoc-Viet Tran, "A Translator for American Sign Language to Text and Speech", 2016 IEEE 5th Global Conference on Consumer Electronics.
- [37] Thongpan Pariwat, Pusadee Seresangtakul, "Thai Finger-Spelling Sign Language Recognition Using Global and Local Features with SVM", 9th International Conference on Knowledge and Smart Technology (KST), 2017